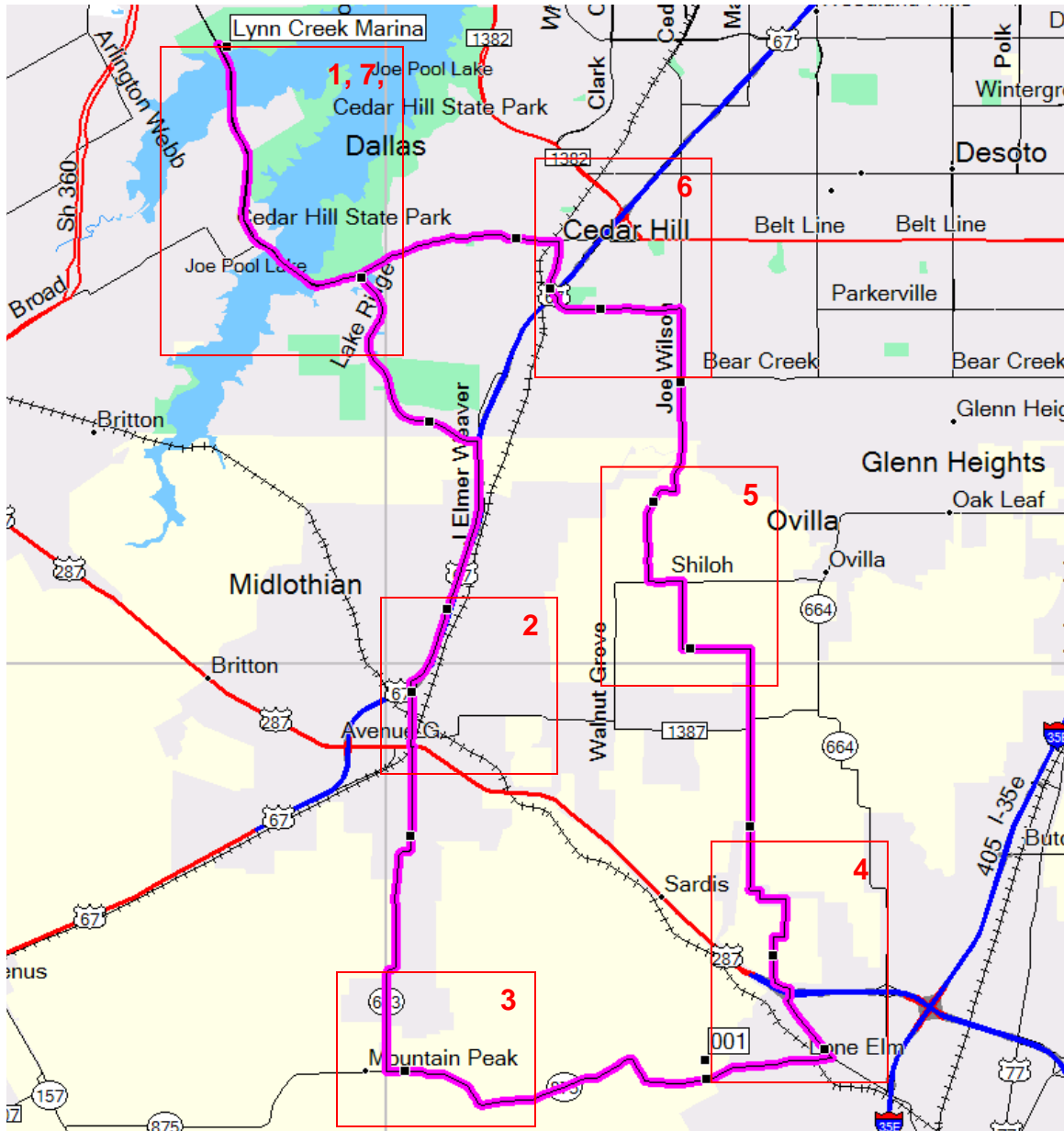


Lone Elm Route

This 50 mile route is one of several Best of the Southwest routes that originate at the Lynn Creek Marina on Joe Pool Lake. The ride heads south from Joe Pool Lake and loops through the towns of Midlothian, Mountain Peak, Lone Elm, Ovilla and Cedar Hill. There is an optional loop into Waxahachie that adds 8 miles to the trip

The orange boxes on the map correspond to the detail maps following. All maps are oriented North.



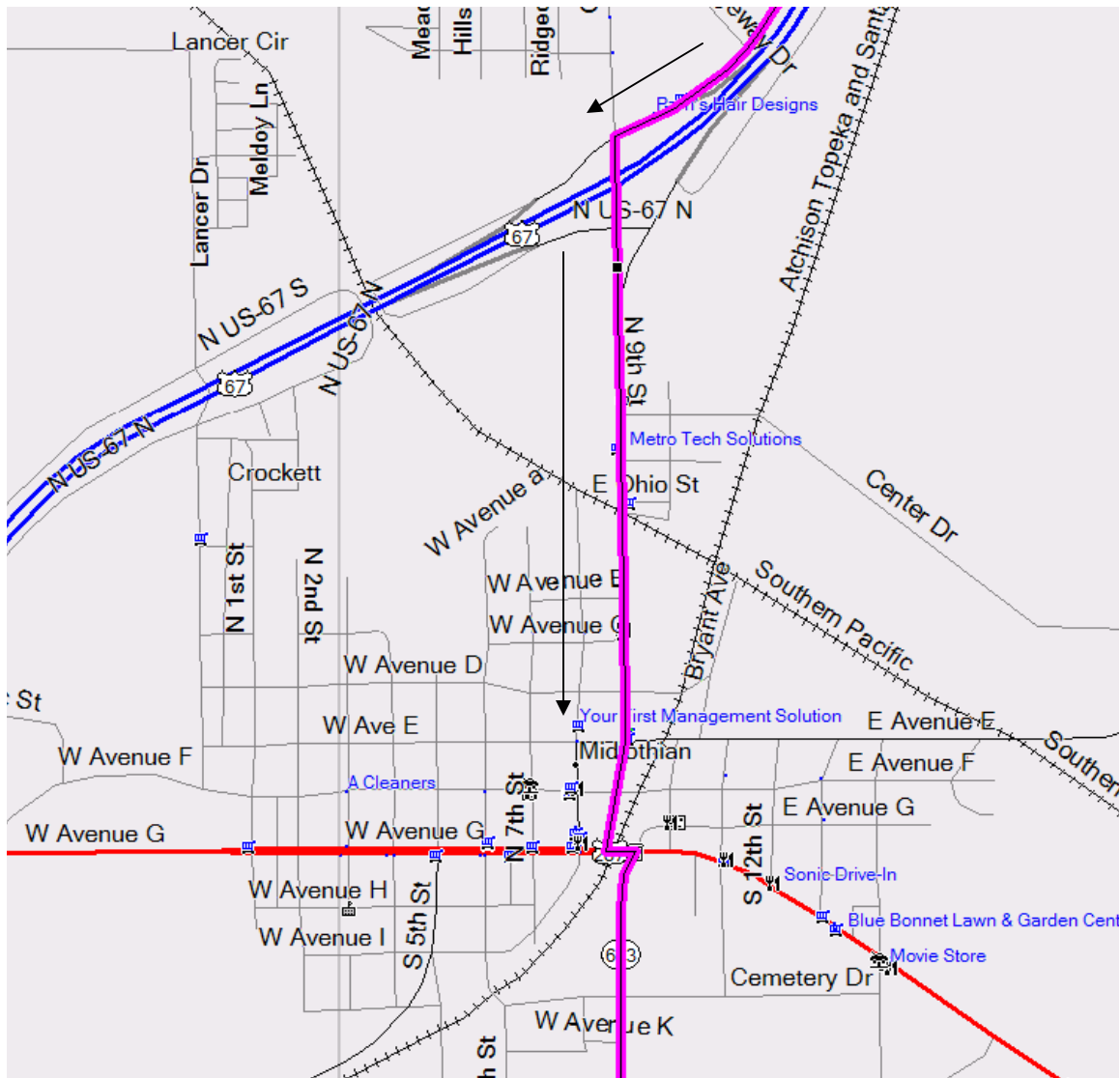
To reach the Lynn Creek Marina take I-20 west, if you are coming from Dallas and east if you are coming from Arlington or Fort Worth. Exit I-20 at Great Southwest Parkway, turn south and follow the signs to Lynn Creek Marina.

1. Lynn Creek Mariana



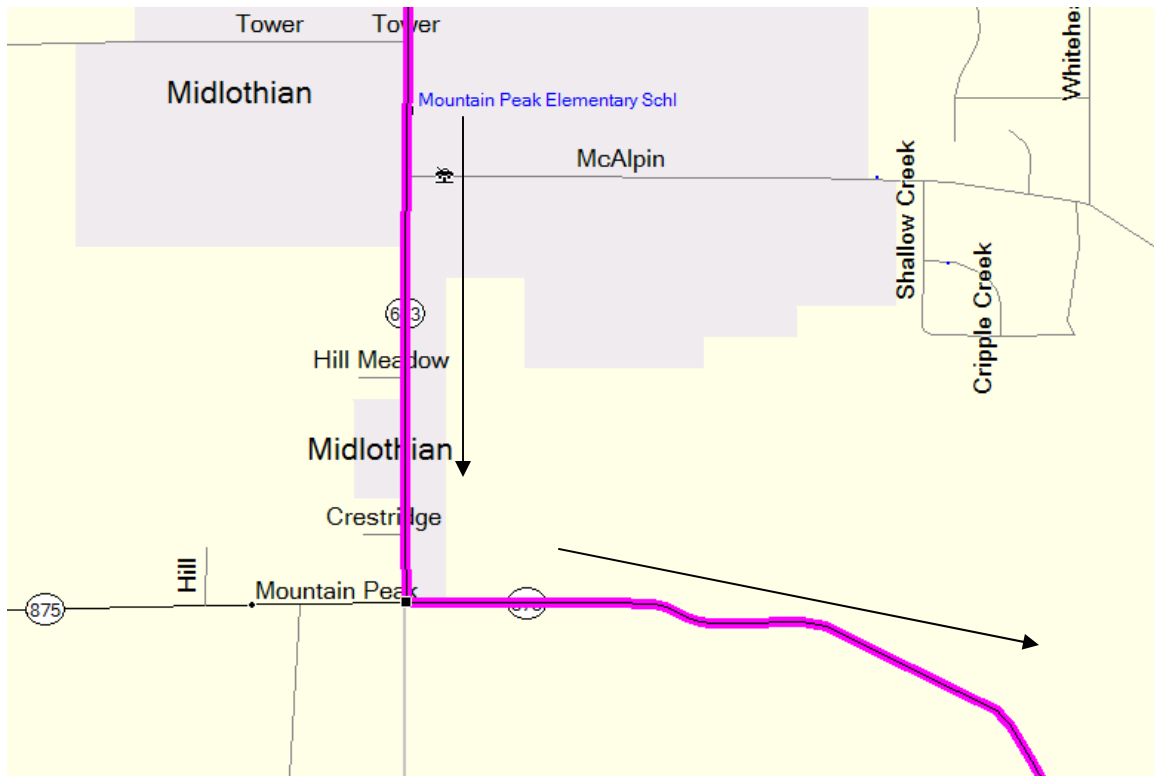
Mile	Distance	Directions / Comments
0	0	Leave the Lynn Creek Marina parking lot
0.2	0.2	Turn left on Lake Ridge Parkway
5.0	4.8	After crossing the second bridge turn right to continue on Lake Ridge Parkway at the Lake Ridge development. Straight ahead is Mansfield Road.

2. Midlothian



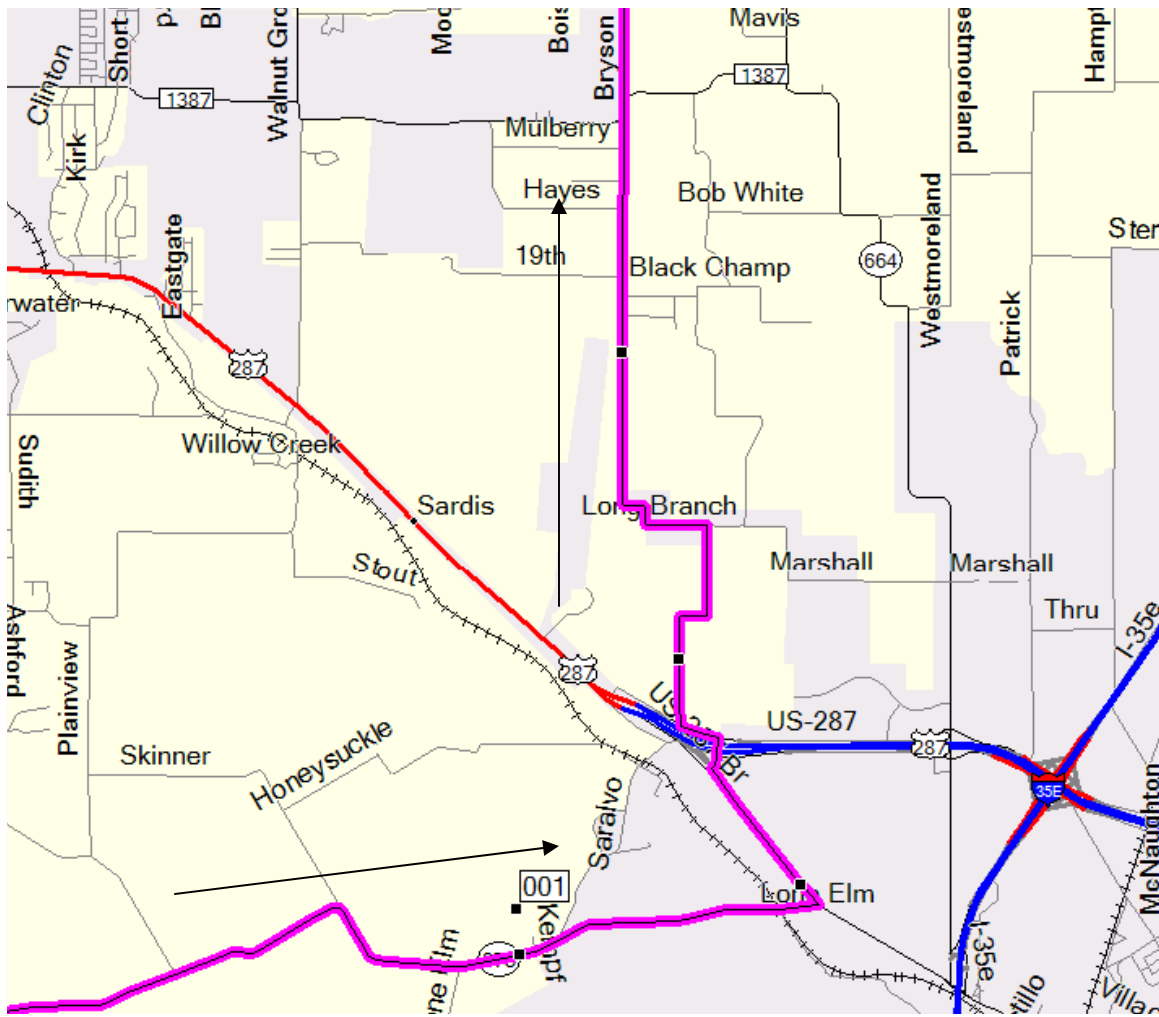
Mile	Distance	Directions / Comments
5.0	0.0	Follow Lake Ridge Parkway until it ends at Highway 67. (not shown)
8.5	3.5	Turn right (southwest) on the Highway 67 service road.(not shown)
12.3	3.8	Turn left (south) onto North 9 th Street It becomes Plaza Drive when it crosses Avenue E
13.3	1.0	Turn left (east) on Avenue G when Plaza Drive ends. (not shown).
13.4	0.1	Cross the railroad tracks and immediately turn right (south) onto Highway 663. (not shown)

3. Mountain Peak



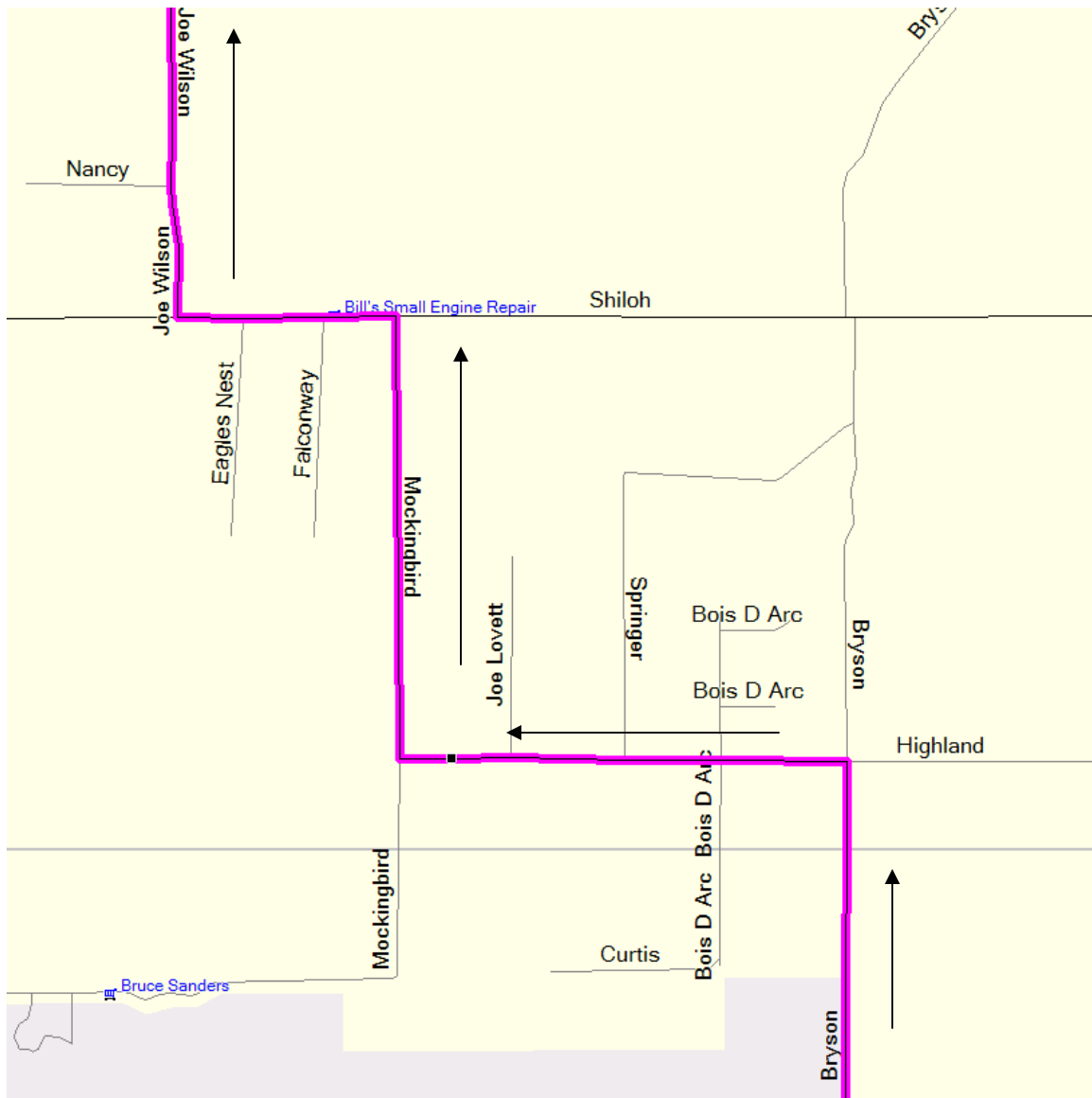
Mile	Distance	Directions / Comments
13.40	0	Follow Highway 663 south to Mountain Peak.
18.4	5.0	Turn left (east) onto Highway 875 when Highway 663 ends.

4. Lone Elm



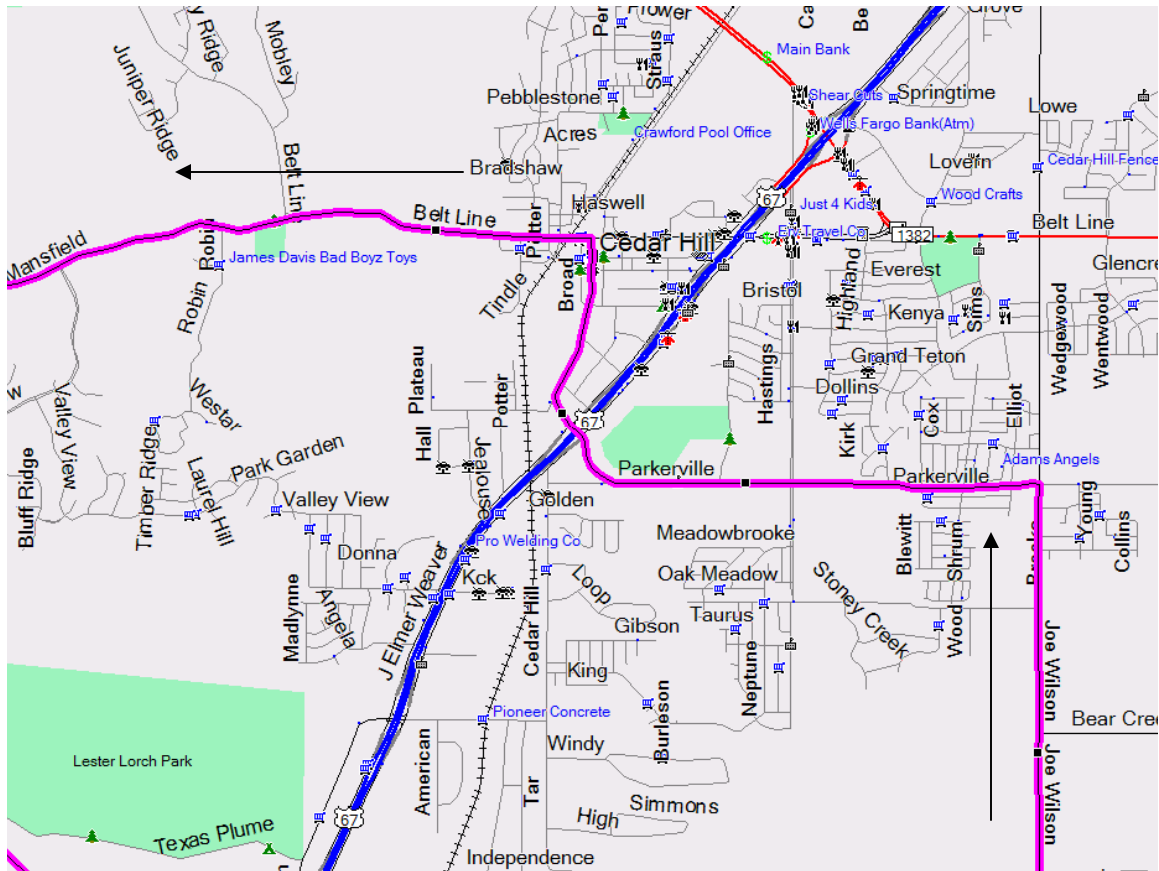
Mile	Distance	Directions / Comments
18.4	0	Follow 875 east through the town of Lone Elm.
25.6	7.2	Turn left on 287 business
26.6	1.0	Turn right and cross under I-287
26.7	0.1	Turn left and follow the I-287 service road north.
26.9	0.2	Turn right on Black Champ Road
28.3	1.4	Turn left on Long Branch Road.

5. Ovilla



Mile	Distance	Directions / Comments
28.3	0	Follow Long Branch west then north.
31.3	3.0	Long Branch turns into Bryson when it crosses 1387 (not shown)
32.4	1.1	Turn left on Highland
33.4	1.0	Turn right (north) on Mockingbird
34.4	1.0	Turn left on Shiloh
34.9	0.5	Turn right on Joe Wilson

6. Cedar Hill



Mile	Distance	Directions / Comments
34.9	0	Continue north on Joe Wilson as it wanders north.
39.2	4.3	Turn left on Parkerville.
40.9	1.7	Merge right onto Tidwell and follow Tidwell into Cedar Hill
41.9	1.0	Turn left onto Belt Line

7. Lynn Creek Marina



Mile	Distance	Directions / Comments
41.9	0	Continue west on Beltline.
43.1	1.2	Stay with Mansfield Rd as Belt Line goes off to the right.
44.9	1.8	Mansfield Road becomes Lake Ridge Parkway again just before it reaches the lake.
44.9	0,0	Continue on Lake Ridge Parkway north across the Lake to the Lynn Creek Marina.
49.7	4.8	Turn right into the Lynn Creek Marina.
49.9	0.2	Turn left into the parking lot.